



H.265



SAFR SC800 SCAN Facial Recognition Dome Camera

SAFR SCAN brings NIST-leading live video face recognition and video analytics features to the edge. Embedded directly into the camera, SAFR utilizes onboard compute functionality — eliminating the need for servers dedicated to processing video streams.

By eliminating server hardware, SAFR SCAN saves you on average \$500 per camera in on-premises server hardware. Leverage powerful video analytics capabilities, in real-time with dramatic reductions in total cost of ownership.

Facial Recognition at the Edge



Facial Recognition

99.9% recognition accuracy per NIST



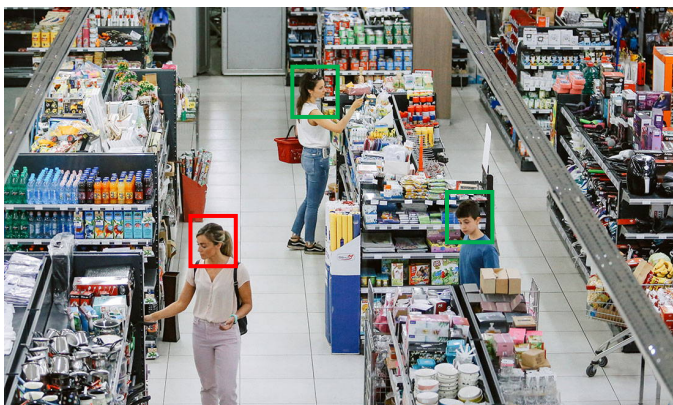
Live Video

The best solution for live video applications



Watchlist

Automated identification of persons of interest



Greater intelligence, lower TCO

- Perform key processing tasks on-camera – Face Capture and Recognition
- Reduce network bandwidth and eliminate server hardware demands
- Real-time face recognition and video analytics is now more affordable whether you deploy on one camera or hundreds

SC800 SPECIFICATIONS

Biometrics	
FAR (1:1 / 1:N)	Up to 0.0001%
Capacity	Up to 90,000 Users
Operational Distance	Up to 30m (100ft)
Computer Vision	
Security	Surveillance Watchlist / Person of Interest
	Face Match and Face Search
Marketing	Age / Gender / Sentiment
Healthcare	Mask Detection
	Detection with Mask
General Electrical	
Power	PoE IEEE 802.3af Class3, DC12V
Power Consumption	DC Max 13.1W PoE Max 15.0W
Mechanical	
Dimensions	52" x 52" (130 x 130 cm)
Housing	Outdoor Dome
Color	White
Material	Aluminum Die Casting
Weight	3.2 lbs (1.42 kg)
Light Source	IR LEDs
Environmental	
Operating Temp	-40C to +60C
Humidity	10% to 90% (non-condensing)
Storage Temp	-40F (-40C) to +140F (60C)
Vandal	IK10
IP Rating	IP67
Certifications	FCC, CE, RoHS
Network	
Ethernet	RJ45(1000Base-T(1Gbps))
Protocols	TCP/IP UDP AutoIP RTP(UDP/TCP) RTSP NTP HTTP HTTPS SSL DNS DHCP ICMP SNMPv1/v2/v3(MIB-2)

Security	HTTPS(SSL) IP filtering 802.1x
Video Output	RTSP
Video	
Image Sensor	1 /2.8" CMOS
Max Resolution	3840(H) x 2160(V)
Min. Illumination	Color: 0.12 Lux BW: 0 Lux IR Sensitive
Signal/Noise Ratio	50dB
Scanning	Progressive Scan
Compression	H.264 H.265 MJPEG
Streaming	Triple Streaming (3rd Only MJPEG)
Bitrate	100Kbps~25Mbps
Events	
Audio In / Out	Mic / 1 Line
Alarm In / Out	1 Line / 1 Line
Lens	
Focal Length	6-22mm
Aperture	F1.6
Lens Type	Motorized, Varifocal
IRIS Type	P-Iris Enabled
Angle of View	HFOV: 18.1°~49.3° VFOV: 10.2°~24.3°
Zoom	5x Optical
Image	
Shutter Speed	Auto / Manual (1/30 ~ 1/32000) Anti-Flicker Slow Shutter (1/2,1/3,1/5,1/6,1/7.5, 1/10)
Auto Gain Control	Auto
Day/Night	True Day/Night
Digital Noise Reduction	3D DNR
Wide Dynamic Range	Up to 120dB, Face Prioritization Exposure, Customizable Backlight Compensation
IR LED	100ft (30m)
Exposure Control	Custom, Face Priority, Scene Priority
Function	Person Detection, Mirror and Flip

ACCESSORIES



SRF-CAM-WALL



SRF-CAM-CAP



SRF-CAM-JUNCTION



SRF-CAM-CEILING



SRF-CAM-CORNER



SRF-CAM-POLE



SRF-CAM-FLUSH

